

*Mike*  
**Dobson**



**60 Wakefield Road**  
Swillington, Leeds, LS26 8DJ

**£190,000**



# 60 Wakefield Road

Nestled in the desirable area of Swillington, Leeds, this charming three-bedroom mid-terrace house on Wakefield Road presents an excellent opportunity for families and professionals alike. The property boasts a modern fitted kitchen and dining room, perfect for both casual meals and entertaining guests. The main bedroom features fitted wardrobes, providing ample storage space, while the additional two bedrooms offer versatility for family living or home office use.

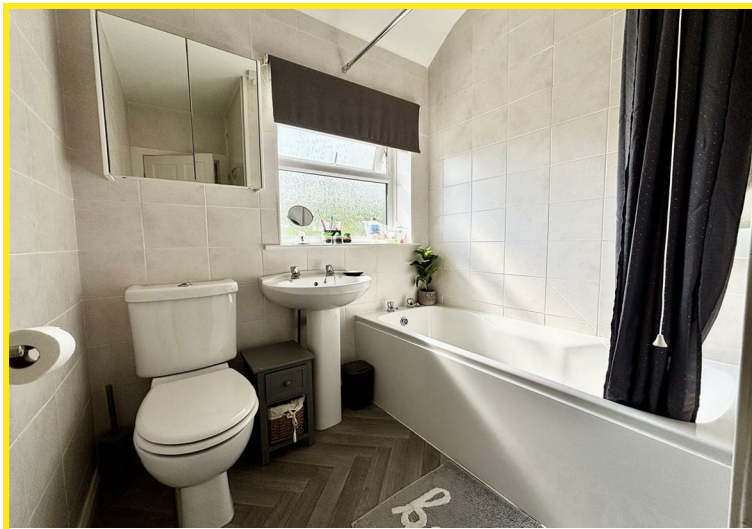
The bathroom is well-appointed with a contemporary three-piece suite, including a rectangular panelled bath with a shower overhead, a pedestal wash basin, and a low flush WC, ensuring convenience and comfort for all residents.

One of the standout features of this property is the generous outdoor space. The large garden is a delightful retreat, complete with a well-maintained lawn, a decked seating area, and a paved patio, ideal for summer gatherings or quiet evenings outdoors. Additionally, off-road parking to the rear adds to the practicality of this home, making it a rare find in such a sought-after location.

With local amenities just a stone's throw away, this property offers both comfort and convenience, making it an ideal choice for those looking to settle in a vibrant community. Don't miss the chance to make this lovely house your new home.

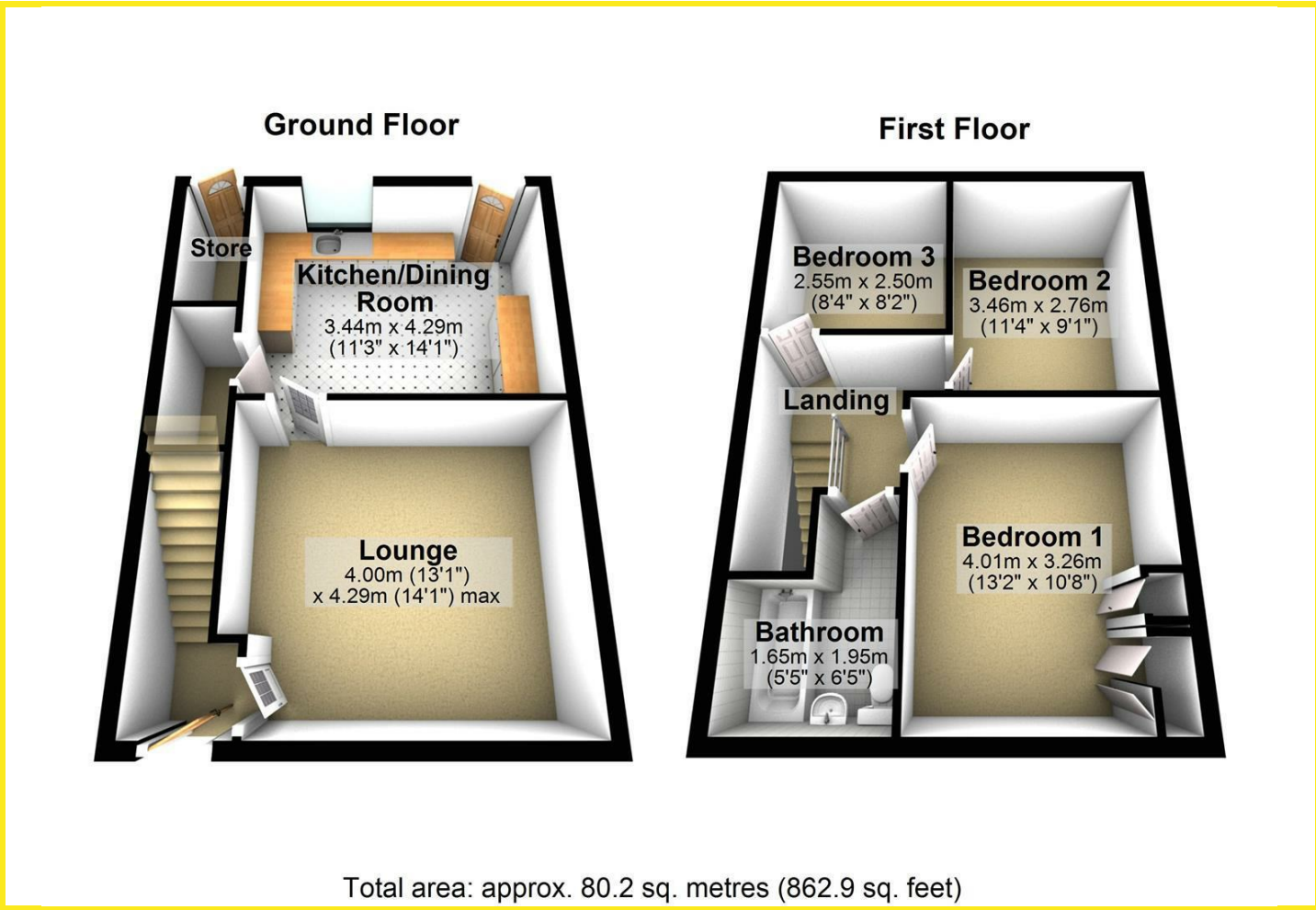








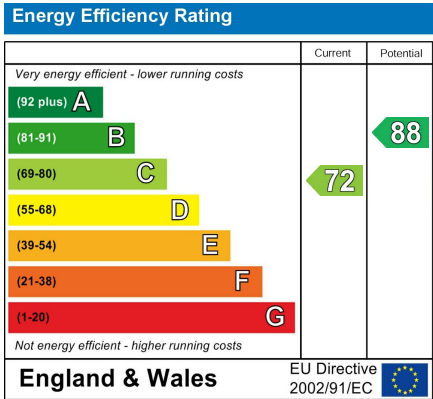
Floor Plan



Area Map



Energy Efficiency Graph



Directions

From Garforth take the A642 towards Wakefield. On entering the village of Swillington proceed ahead on to Wakefield Road and the property can be found on the right hand side as indicated by the agents board.